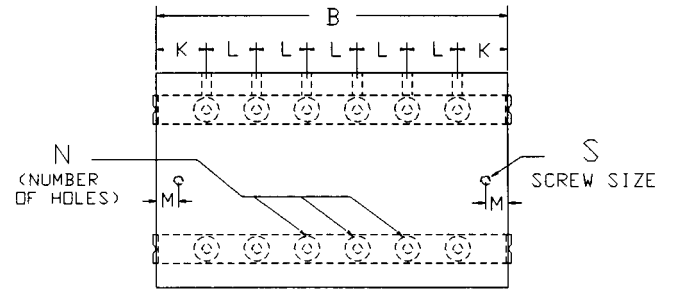
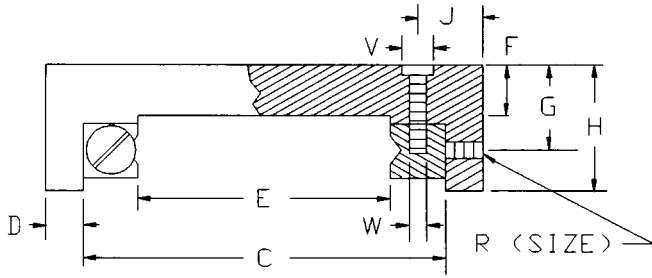
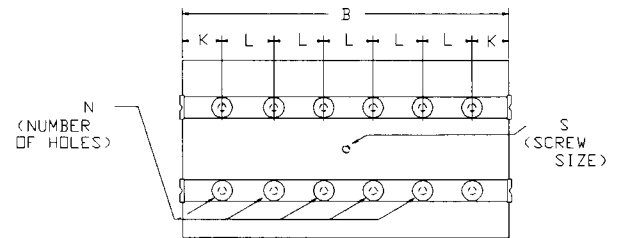
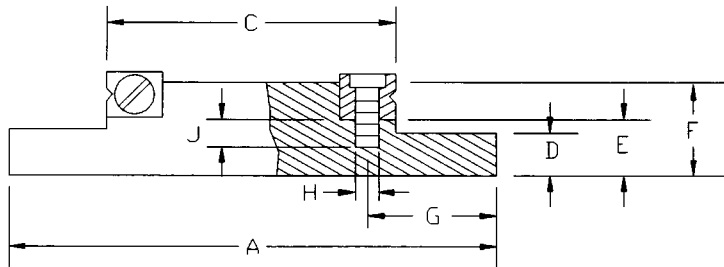


# DESIGN SPECIFICATIONS



## DETAILED DIMENSIONS - ADJUSTABLE PLATES MODEL

MODEL #	A	B	C	D	E	F	G	H	J	K	L	M	P	R	S	T	W	V	N
X1-1-05		1.378 35.0																	4
X1-2-1		1.969 50.0																	6
X1-25-15	1.57	2.559 65.0	1.181	.197	.748	.295	.433	.551	.300	.394	.591	.394	.591	M3	NA	NA	M3	.240	8
X1-3-2		3.150 80.0																	10
X1-35-25		3.740 95.0																	12
X1-4-3		4.331 110.0																	14
X1-5-4	40.0	4.921 125.0	30.0	5.0	19.0	7.5	11.0	14.0	7.6	10.0	15.0	10.0	15.0	M3	NA	NA	M3	6.1	16
X1-6-5		6.102 155.0																	20
X1-7-6		7.283 185.0																	24
8-8-7	8.00 203.2	8.010 203.5	6.800 172.7	.600 15.2	5.248 133.3	.570 14.5	.866 22.0	1.378 35.0	.954 24.2	1.969 50.0	3.937 100.0	2.037 51.7	3.937 100.0	10-32	N/A	N/A	N/A	.250 6.4	2
8-12-11		12.010 305.1										2.069 52.6							3
8-16-15		16.010 406.7										2.100 53.3							4
8-20-19		20.010 508.3										2.132 54.2							5
8-24-23		24.010 609.9										2.163 54.9							6



## DETAILED DIMENSIONS - FIXED PLATES MODEL

MODEL #	A	B	C	D	E	F	G	H	J	K	L	M	P	R	S	T	W	V	N
X1-1-05		1.378 35.0																	4
X1-2-1		1.969 50.0																	6
X1-25-15	1.56	2.559 65.0	.236	.256	.275	.470	.571	.240	NA	.394	.591	NA	NA	NA	M3	NA	NA	NA	8
X1-3-2		3.150 80.0																	10
X1-35-25		3.740 95.0																	12
X1-4-3		4.331 110.0																	14
X1-5-4	39.7	4.921 125.0	6.0	6.5	7.0	11.9	14.5	6.1	NA	10.0	15.0	NA	NA	NA	M3	NA	NA	NA	16
X1-6-5		6.102 155.0																	20
X1-7-6		7.283 185.0																	24
8-8-7	8.00 203.2	7.992 203.0	3.335 84.7	.866 22.0	1.102 28.0	1.693 43.0	1.973 50.1	.250 6.4	.687 17.4	2.029 51.5	3.937 100.0	NA	NA	NA	1/4-28	NA	NA	NA	5
8-12-11		11.992 304.6								2.060 51.5									3
8-16-15		15.992 406.2								2.091 53.1									4
8-20-19		19.992 507.8								2.123 53.9									5
8-24-23		23.992 609.4								2.154 54.7									6