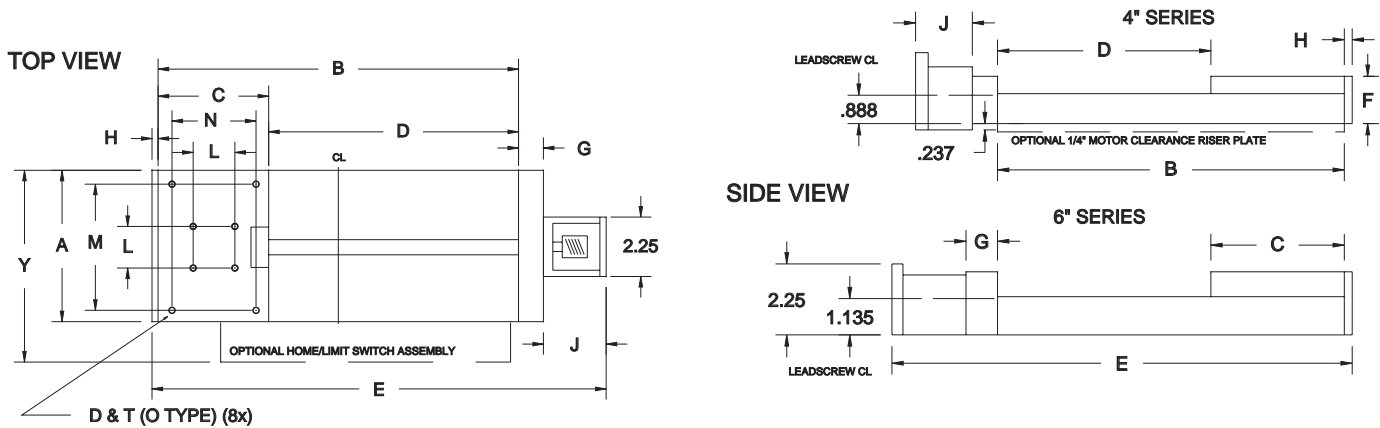


RECIRCULATING BEARING MOTOR READY STAGES

PRODUCT FEATURES

NEMA MOTOR MOUNTS & COUPLINGS; ALUMINUM OR CAST IRON CONSTRUCTION; 4" & 6" WIDTHS; NO CAGE CREEP



X = 'RB' FOR ROLLED BALLSCREW; 'L' FOR ROLLED LEADSCREW (.003/FT LEAD ACCURACY)=====>

4" WIDE 118 SERIES

* G = 1.00" WHEN 'U' OPTION SELECTED

MODEL	A	B	C	D	E	F	G*	J	W	Y
RT(A/C)4- 4- 1/X***	4.0 101.6	4.06 103.1	3.06 77.7	1.00 25.4	6.81 173.0	1.44 36.5	0.63 15.9	1.78 45.1	4.50 114.3	5.00 127.0
RT(A/C)4- 5- 2/X***	4.0 101.6	5.06 128.5	3.06 77.7	2.00 50.8	7.81 198.4	1.44 36.5	0.63 15.9	1.78 45.1	4.50 114.3	5.00 127.0
RT(A/C)4- 7- 4/X***	4.0 101.6	7.06 179.3	3.06 77.7	4.00 101.6	9.81 249.2	1.44 36.5	0.63 15.9	1.78 45.1	4.50 114.3	5.00 127.0
RT(A/C)4- 9- 6/X***	4.0 101.6	9.06 230.1	3.06 77.7	6.00 152.4	11.81 300.0	1.44 36.5	0.63 15.9	1.78 45.1	4.50 114.3	5.00 127.0
RT(A/C)4-11- 8/X***	4.0 101.6	11.06 280.9	3.06 77.7	8.00 203.2	13.81 350.8	1.44 36.5	0.63 15.9	1.78 45.1	4.50 114.3	5.00 127.0
RT(A/C)4-13-10/X***	4.0 101.6	13.06 331.7	3.06 77.7	10.00 254.0	15.81 401.6	1.44 36.5	0.63 15.9	1.78 45.1	4.50 114.3	5.00 127.0

*** = 3/8" OD SCREW LEAD: **RB** = .125", 1mm, 2mm; (<.002 BACKLASH); **L** = .0125, .025, .050, .062, .100, .125, .200, .500, 2mm, 5mm, 25mm LEAD.

*** = 1/4" OD UL SCREW LEAD: **U** = .025", .050", .100", .200", 1mm, 2mm; *** = 12mm OD GROUND BALLSCREW LEAD: **GB** = .100", 2.5mm

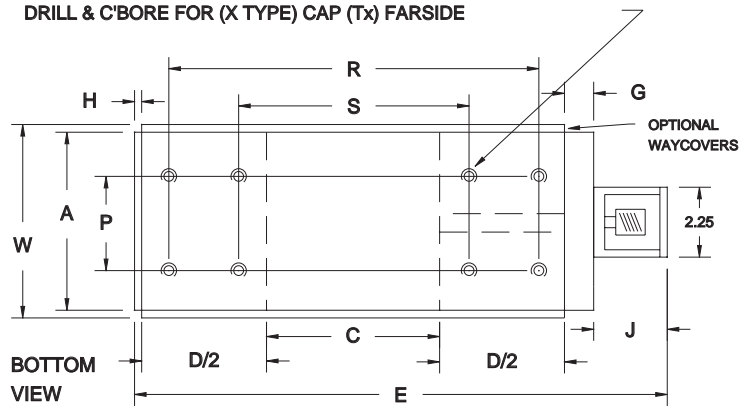
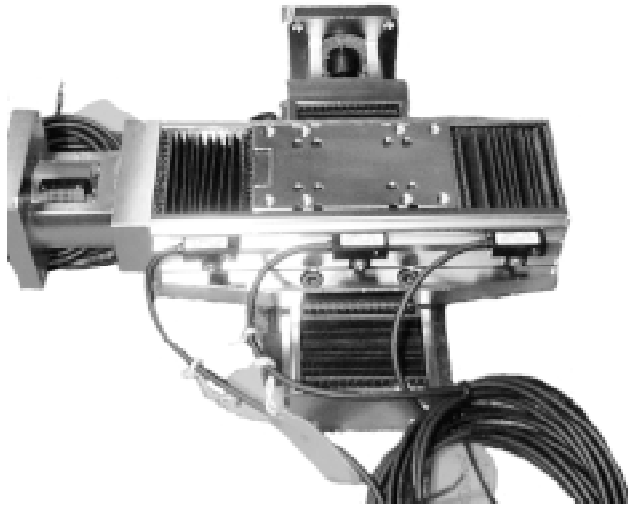
6" WIDE 236 SERIES

MODEL	A	B	C	D	E	F	G	J	W	Y
RT(A/C)6- 6- 2/X***	6.0 152.4	6.00 152.4	4.00 101.6	2.00 50.8	9.50 241.3	2.00 50.8	1.00 25.4	2.25 57.2	6.50 165.1	7.00 177.8
RT(A/C)6- 8- 4/X***	6.0 152.4	8.00 203.2	4.00 101.6	4.00 101.6	11.50 292.1	2.00 50.8	1.00 25.4	2.25 57.2	6.50 165.1	7.00 177.8
RT(A/C)6-10- 6/X***	6.0 152.4	10.00 254.0	4.00 101.6	6.00 152.4	13.50 342.9	2.00 50.8	1.00 25.4	2.25 57.2	6.50 165.1	7.00 177.8
RT(A/C)6-12- 8/X***	6.0 152.4	12.00 304.8	4.00 101.6	8.00 203.2	15.50 393.7	2.00 50.8	1.00 25.4	2.25 57.2	6.50 165.1	7.00 177.8
RT(A/C)6-16-12/X***	6.0 152.4	16.00 406.4	4.00 101.6	12.00 304.8	19.50 495.3	2.00 50.8	1.00 25.4	2.25 57.2	6.50 165.1	7.00 177.8
RT(A/C)6-20-16/X***	6.0 152.4	20.00 508.0	4.00 101.6	16.00 406.4	23.50 596.9	2.00 50.8	1.00 25.4	2.25 57.2	6.50 165.1	7.00 177.8
RT(A/C)6-24-20/X***	6.0 152.4	24.00 609.6	4.00 101.6	20.00 508.0	13.50 342.9	2.00 50.8	1.00 25.4	2.25 57.2	6.50 165.1	7.00 177.8

*** = 5/8" OD SCREW LEAD: **RB** = .200", 2mm; (<.002 BACKLASH); **L** = .025", .033", .050", .100", .200", .500", 2.00", 4mm LEAD.

*** = 1/2" OD UL SCREW LEAD: **U** = .025", .050", .100", .200", 1mm, 2mm, 5mm; *** = 16mm OD BALLSCREW LEAD: **GB** = .100", .200", 5mm,

ALUMINUM: CLEAR ANODIZE FINISH, IRON: NO FINISH, NEMA 23 SIZE MOTOR MOUNT AND FLEXIBLE COUPLING SUPPLIED AS STANDARD. OPTIONS: HOME/LIMIT SWITCHES, 17/34 FRAME / CUSTOM MOTOR MOUNTS, CUSTOM MOUNTING PROVISIONS, MOTOR CLEARANCE PLATES, BLACK ANODIZE, ELECTROLESS NICKEL PLATE, 6" x 6" CARRIAGE.



‘GB’ FOR GROUND BALLSCREW; ‘U’ FOR GROUND LEADSCREW (.0003”/FT LEAD ACCURACY)

4" WIDE 118 SERIES

L	M	N	O	P	R	S	X	T	RAIL SET	WEIGHT		MAX * LOAD	MODEL
										A	C		
1.500 63.50	3.000 76.20	2.500 63.50	1/4-20 (M6x1.0)	2.000 50.80	3.000 76.20	NA	1/4" LH (M6)	4	RC3RS-04	3.6	7.6	116	RT(A/C)4- 4- 1/X***
1.500 63.50	3.000 76.20	2.500 63.50	1/4-20 (M6x1.0)	2.000 50.80	4.000 101.60	NA	1/4" LH (M6)	4	RC3RS-05	4.0	9.2	116	RT(A/C)4- 5- 2/X***
1.500 63.50	3.000 76.20	2.500 63.50	1/4-20 (M6x1.0)	2.000 50.80	5.000 127.00	NA	1/4" LH (M6)	4	RC3RS-07	4.7	10.8	116	RT(A/C)4- 7- 4/X***
1.500 63.50	3.000 76.20	2.500 63.50	1/4-20 (M6x1.0)	2.000 50.80	7.000 177.80	NA	1/4" LH (M6)	4	RC3RS-09	5.4	12.4	116	RT(A/C)4- 9- 6/X***
1.500 63.50	3.000 76.20	2.500 63.50	1/4-20 (M6x1.0)	2.000 50.80	10.000 254.00	5.000 127.00	1/4" LH (M6)	8	RC3RS-11	6.1	14.0	116	RT(A/C)4-11- 8/X***
1.500 63.50	3.000 76.20	2.500 63.50	1/4-20 (M6x1.0)	2.000 50.80	11.000 279.40	6.000 152.40	1/4" LH (M6)	8	RC3RS-13	6.7	15.6	116	RT(A/C)4-13-10/X***

HORIZONTAL ATTITUDE NO-LOAD TORQUE REQUIREMENTS (LEADSCREWS): BREAKAWAY = 4-10 OZ/IN; CONSTANT SPEED = 3-7 OZ/IN
 HORIZONTAL ATTITUDE NO-LOAD TORQUE REQUIREMENTS (BALLSCREWS): BREAKAWAY = 8-14 OZ/IN; CONSTANT SPEED = 6-12 OZ/IN
 CRITICAL SPEED LIMIT: BALLSCREWS = 3000 RPM'S; UNIVERSAL LEADSCREWS = 800 RPM'S; LEADSCREWS = 1800 RPM'S

6" WIDE 236 SERIES

L	M	N	O	P	R	S	X	T	RAIL SET	WEIGHT		MAX * LOAD	MODEL
										A	C		
2.000 50.80	5.000 127.00	3.000 76.20	5/16-18 (M8x1.2)	3.500 88.90	4.000 101.60	NA	5/16" LH (M8)	4	RC4RS-06	9.9	17.7	420	RT(A/C)6- 6- 2/X***
2.000 50.80	5.000 127.00	3.000 76.20	5/16-18 (M8x1.2)	3.500 88.90	6.000 152.40	NA	5/16" LH (M8)	4	RC4RS-08	10.8	21.3	420	RT(A/C)6- 8- 4/X***
2.000 50.80	5.000 127.00	3.000 76.20	5/16-18 (M8x1.2)	3.500 88.90	8.000 203.20	NA	5/16" LH (M8)	4	RC4RS-10	11.7	25.8	420	RT(A/C)6-10- 6/X***
2.000 50.80	5.000 127.00	3.000 76.20	5/16-18 (M8x1.2)	3.500 88.90	10.000 254.00	NA	5/16" LH (M8)	4	RC4RS-12	12.6	29.5	420	RT(A/C)6-12- 8/X***
2.000 50.80	5.000 127.00	3.000 76.20	5/16-18 (M8x1.2)	3.500 88.90	12.000 304.80	6.000 152.40	5/16" LH (M8)	8	RC4RS-16	14.4	36.4	420	RT(A/C)6-16-12/X***
2.000 50.80	5.000 127.00	3.000 76.20	5/16-18 (M8x1.2)	3.500 88.90	16.000 406.40	8.000 203.20	5/16" LH (M8)	8	RC4RS-20	16.2	43.2	420	RT(A/C)6-20-16/X***
2.000 50.80	5.000 127.00	3.000 76.20	5/16-18 (M8x1.2)	3.500 88.90	20.000 508.00	10.000 254.0	5/16" LH (M8)	8	RC4RS-24	18.1	50.1	420	RT(A/C)6-16-12/X***

HORIZONTAL ATTITUDE NO-LOAD TORQUE REQUIREMENTS (LEADSCREWS): BREAKAWAY = 8-14 OZ/IN; CONSTANT SPEED = 6-12 OZ/IN
 HORIZONTAL ATTITUDE NO-LOAD TORQUE REQUIREMENTS (BALLSCREWS): BREAKAWAY = 10-24 OZ/IN; CONSTANT SPEED = 6-20 OZ/IN
 CRITICAL SPEED LIMIT: BALLSCREWS = 4000 RPM'S; UNIVERSAL LEADSCREWS = 1200 RPM'S; LEADSCREWS = 2400 RPM'S

* MAXIMUM LOAD CALCULATION INCLUDES SAFETY FACTOR AND AXIAL FORCES.