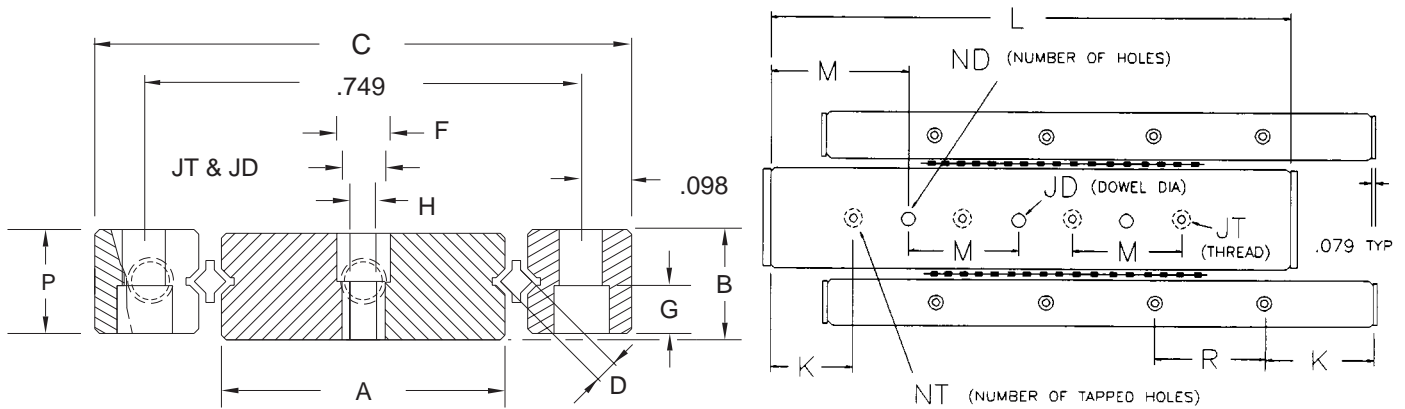


The ALM Low Profile Slide Assemblies and Double "V" Rail Sets allow designers the flexibility to incorporate hardened tool steel crossed roller ways into confined spaces when a standard slide creates interference. The ALM 079 and 118 series configurations permit use in applications previously reserved for drill rod type ball or roller ways. The tool steel ways provide superior travel accuracies, repeatability, life expectancy, vertical attitude durability, shock load capability, and load carrying capacity. When substituting these products into applications normally associated with drill rod type ball or roller ways, an ALM rail set or slide can be expected to last the entire life of a machine. While the initial investment is greater, replacement, maintenance and field service concerns are virtually eliminated.



### 079 SERIES (2mm) DOUBLE "V" RAIL SET

MODEL #	D	A	B	C +.000 -.008	F	G	H	JT	JD	NT	ND	K	M	L		P	R	RPR	TRAVEL		WT lbs.
														in	mm				in	mm	
DVRS079-10										2	2			1.181	30.0			5	0.708	18.0	0.10
DVRS079-20										3	2			1.771	45.0			8	0.944	24.0	0.15
DVRS079-25	0.079	0.433	0.256	0.945	0.173	0.079	0.100	M3	0.118	4	3	0.295	0.591	2.362	60.0	0.236	0.591	11	1.181	30.0	0.20
DVRS079-30										5	4			2.952	75.0			13	1.732	44.0	0.25
DVRS079-35	2.0	11.0	6.5	24.0	4.4	2.0	2.6	M3	3.0	6	5	7.5	15.0	3.543	90.0	6.0	15.0	16	1.968	50.0	0.30
DVRS079-40										7	6			4.133	105.0			18	2.519	64.0	0.35
DVRS079-50										8	7			4.724	120.0			21	2.755	70.0	0.40

STANDARD SET INCLUDES (1) DOUBLE 'V' RAIL (2) STANDARD RAILS (2) PLASTIC ROLLER RETAINER STRIPS (6) ENDPICES