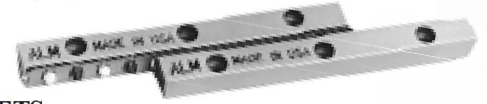
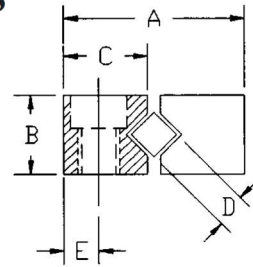
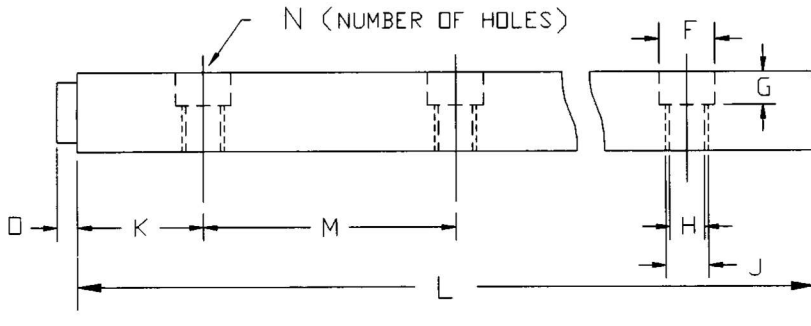


DESIGN SPECIFICATIONS

ALM



236 SERIES (6mm) ROLLER BEARING RAIL SETS

MODEL	+.000 -.008		B	C	E	F	G	H	J	N	K	M	O	L		TRAVEL		MAX CC (LBS)	APPROX WEIGHT LBS.	
	D	A												in	mm	RPR	in			mm
RSMT236-04										2				3.937	100	6	2.682	68	720	1.27
RSMT236-06										3				5.906	150	10	2.844	72	1200	1.93
RSMT236-08										4				7.874	200	12	4.892	124	1440	2.60
RSMT236-10										5				9.843	250	16	5.054	128	1920	3.20
RSMT236-12										6				11.811	300	20	5.214	132	2400	3.93
RSMT236-14										7				13.780	350	22	7.264	185	2640	4.58
RSMT236-16										8				15.748	400	24	9.312	237	2880	5.24
RSMT236-18	.236	1.181	.591	.544	.236	.375	.200	.218	M6	9	.984	1.969	.120	17.717	450	28	9.474	241	3360	5.92
RSMT236-20										10				19.685	500	32	9.634	245	3840	6.63
RSMT236-22	6.0	30mm	15.0	13.8	6.0	9.5	5.1	5.5	M6	11	25.0	50.0	3.0	21.654	550	36	9.796	249	4320	6.98
RSMT236-24										12				23.622	600	40	9.956	253	4800	7.27
RSMT236-26										13				25.591	650	36	17.670	449	4320	7.99
RSMT236-28										14				27.559	700	40	17.830	453	4800	8.31
RSMT236-30										15				29.528	750	42	19.880	505	5040	8.76
RSMT236-32										16				31.496	800	46	20.040	509	5520	9.09
RSMT236-34										17				33.465	850	48	22.090	561	5760	9.48
RSMT236-36										18				35.433	900	50	24.138	613	6000	10.00

STANDARD RAIL SET INCLUDES (4) RAILS (2) ROLLER RETAINER STRIPS (8) ENDSTOPS

354 SERIES (9mm) ROLLER BEARING RAIL SETS

MODEL	+.000 -.008		B	C	E	F	G	H	J	N	K	M	O	L		TRAVEL		MAX CC (LBS)	APPROX WEIGHT LBS.	
	D	A												in	mm	RPR	in			mm
RSMT354-08										2				7.874	200	10	4.728	130	2200	5.6
RSMT354-12										3				11.811	300	15	7.092	180	3300	8.4
RSMT354-16										4				15.748	400	20	9.456	240	4400	11.2
RSMT354-20	.354	1.732	.866	.776	.354	.413	.244	.268	M8	5	1.969	3.937	.158	19.685	500	25	11.820	300	5500	13.9
RSMT354-24										6				23.622	600	30	14.184	360	6600	16.7
RSMT354-28										7				27.559	700	35	16.548	420	7700	19.5
RSMT354-32										8				31.496	800	40	18.912	480	8800	22.3
RSMT354-36	9.0	44.0	22.0	19.7	9.0	10.5	6.2	6.8	M8	9	50.0	100.0	4.0	35.433	900	45	21.276	540	9900	25.0
RSMT354-40										10				39.370	1000	50	23.640	600	11000	28.1
RSMT354-44										11				43.307	1100	55	26.004	660	12100	31.2
RSMT354-48										12				47.244	1200	60	28.328	719	13200	33.8

STANDARD RAIL SET INCLUDES (4) RAILS (2) ROLLER RETAINER STRIPS (8) ENDSCREWS

ROLLERSMT PER RETAINER MAY BE VARIED. (LESS ROLLERSMT = INCREASED TRAVEL; DECREASED LOAD CAPACITY. MORE ROLLERSMT = DECREASED TRAVEL; INCREASED LOAD CAPACITY).

Retainer pitch = .551 (14mm); Standard Retainer Material is Plastic

CORROSION RESISTANCE

CROSSED ROLLER WAYS FABRICATED FROM STAINLESS STEEL ARE OFTEN TOUTED AS A SUPERIOR CHOICE FOR CORROSIVE ENVIRONMENTS. THESE WAYS MUST BE FABRICATED FROM 400 SERIES STAINLESS STEEL DUE TO THE HARDNESS REQUIREMENT (RC 59-61). HOWEVER, 400 SERIES STAINLESS HAS MINIMAL CORROSION RESISTANT PROPERTIES. 300 SERIES STAINLESS OFFERS CORROSION RESISTANCE BUT CAN NOT BE HARDENED. ALM HAS DETERMINED A CHROME PLATING APPLIED TO STANDARD TOOL STEEL OFFERS SUPERIOR CORROSION RESISTANCE AND HARDNESS. COMBINED WITH STAINLESS STEEL ROLLER BEARINGS THESE WAYS OFFER DESIGNERS THE FINEST CORROSION RESISTANT CROSSED ROLLER RAIL SETS AVAILABLE.